

Photo examples in January, how weed straw suppresses the native wildflower seedlings trying to come up, and what a properly mowed area looks like.

BELOW: Edgewood Preserve entrance from Sunset and Hillcrest Way on Jan. 11, 2020. Former wildflower area left of fence, and bottom of hill in the distance, covered with thatch.

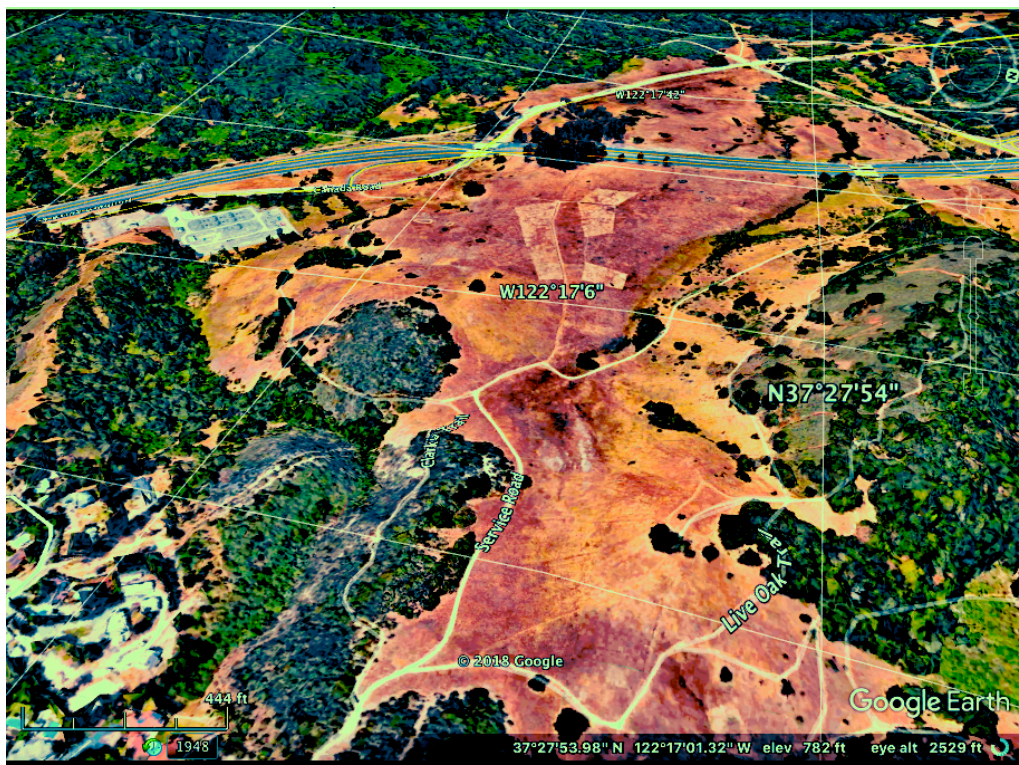


Left, weed grass thatch, covering wildflower seedlings. Wildflower seedlings need light, space, moisture and nutrients, and the thatch must be frequently cut, for native seedling survival.

Right: What our native grasslands *should* look like—Dense tidy tip seedlings and low thatch-- formerly a very common and fire-safe wildflower in San Mateo County.



How the Hillcrest-Sunset entrance to Edgewood Preserve looks a decade or more, before the weed grasses invaded. Red on hillside is where motorcycles stripped off the topsoil, exposing the subsoil, so natives cannot grow back until the organic matter and soil nutrients are put back.



Overview of the Edgewood Preserve, the purple is the serpentine rock.